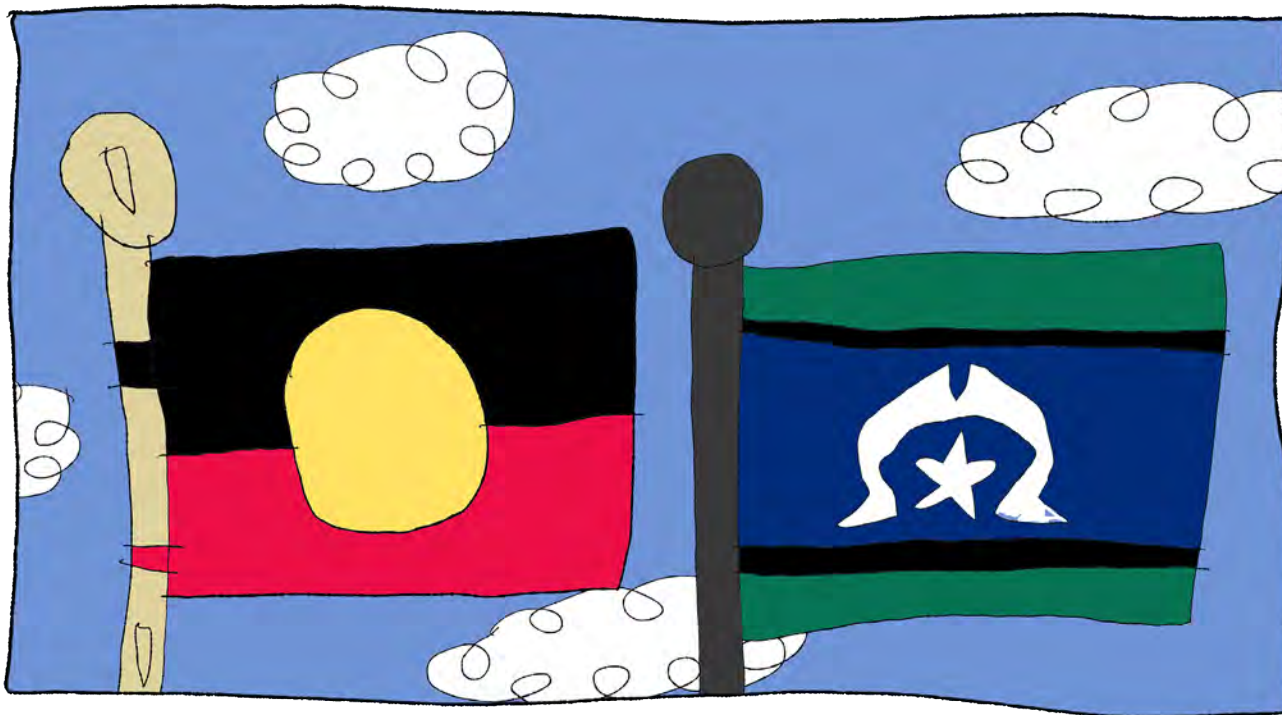
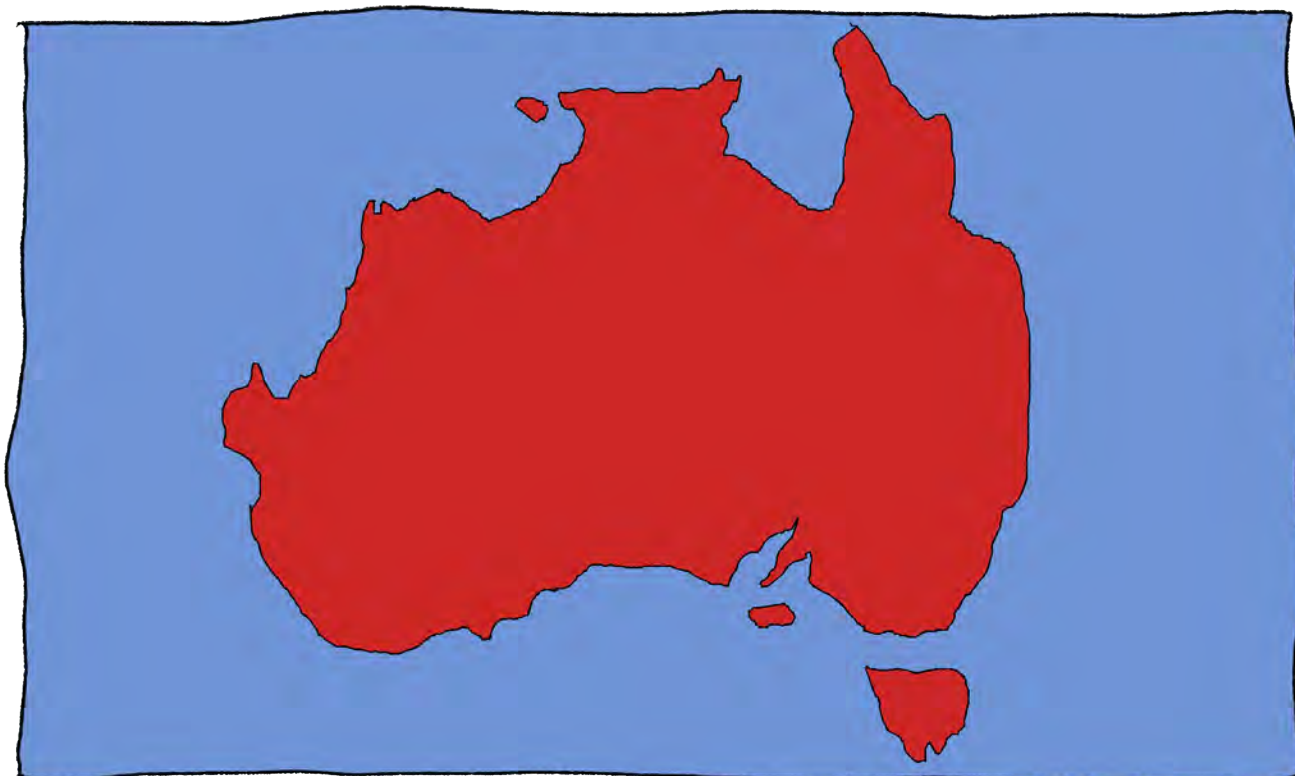


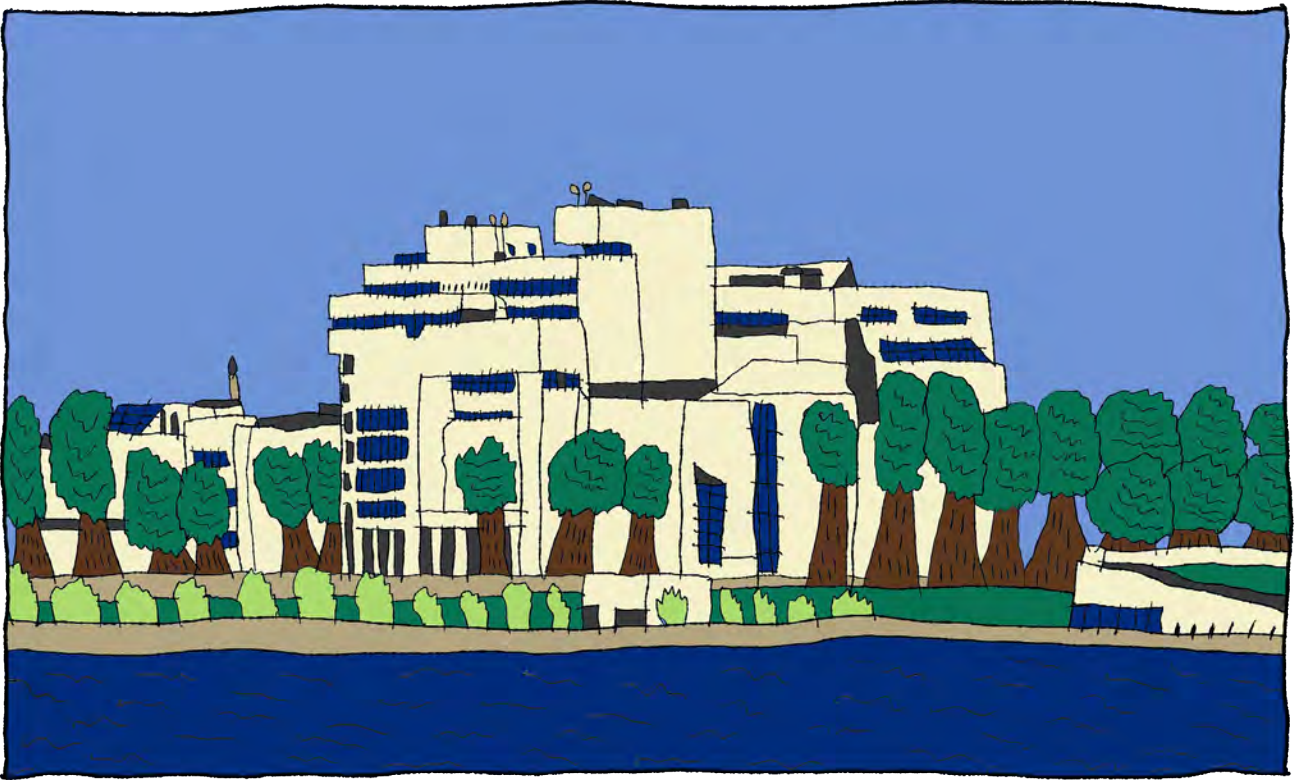
We are on the country of the Ngunnawal and Ngambri people of the Kamberri/Canberra region. We see their connection to Country and culture and pay respect to their Elders, leaders and artists of the past and present.



We pay respect to all Traditional Custodians across Australia whose art we care for and whose lands we travel to.



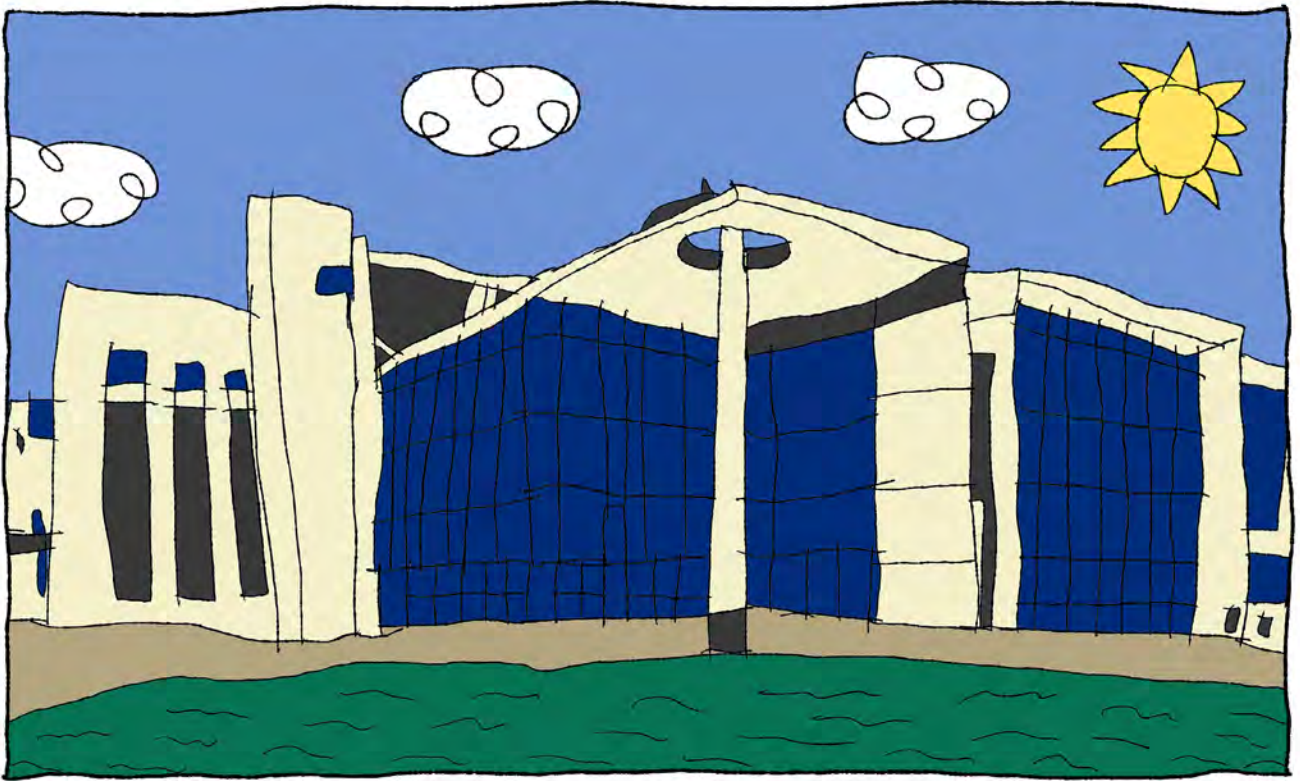
**The National Gallery of Australia, in Kamberri/Canberra,
sits on the shore of Lake Burley Griffin.**



There are more than 250 people working at the Gallery.



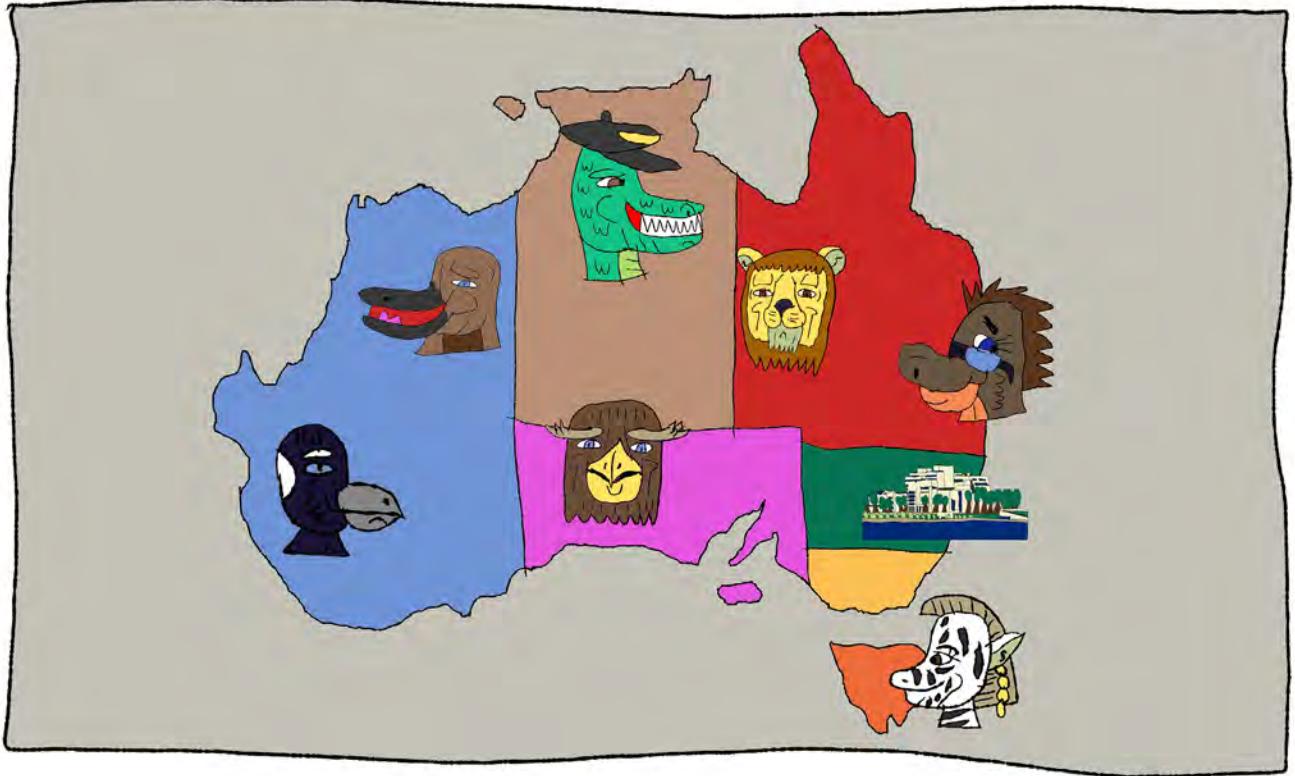
You can find us in this building.



You can find us online.



We also tour galleries around Australia.



We look after Australia's national art collection, which includes more than 155,000 works of art.



**There are many people with disability who are part of our community.
Visitors, workers and some of our greatest artists.**



**We know that disability can be particularly hard for people who are also
First Nations or women, because they may face other challenges too.**



The National Gallery wants to make sure that everyone can experience the Gallery and the art that we have here.



We know this will take time and a good plan.



To help us plan, we worked with Accessible Arts.



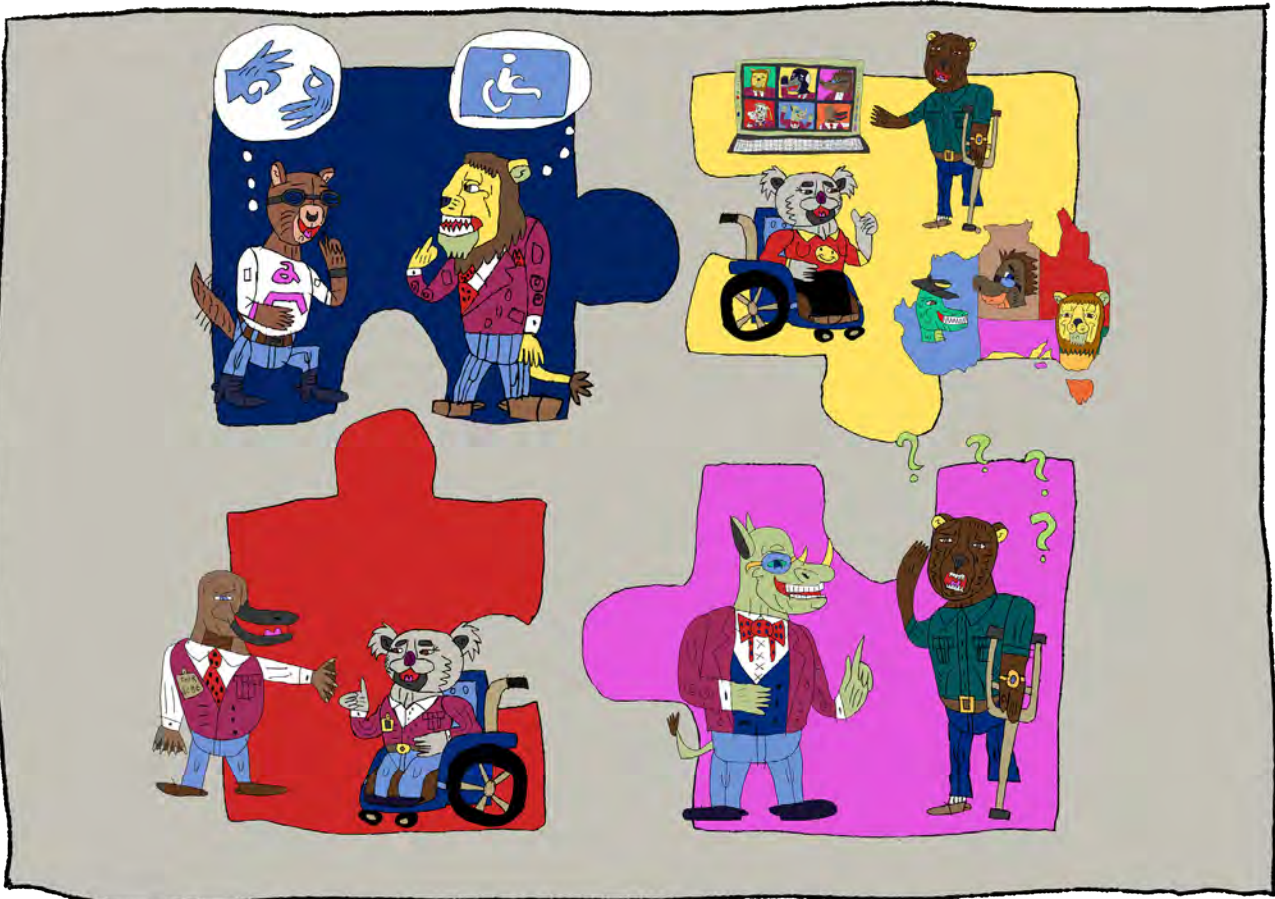
And we involved our staff and our community.



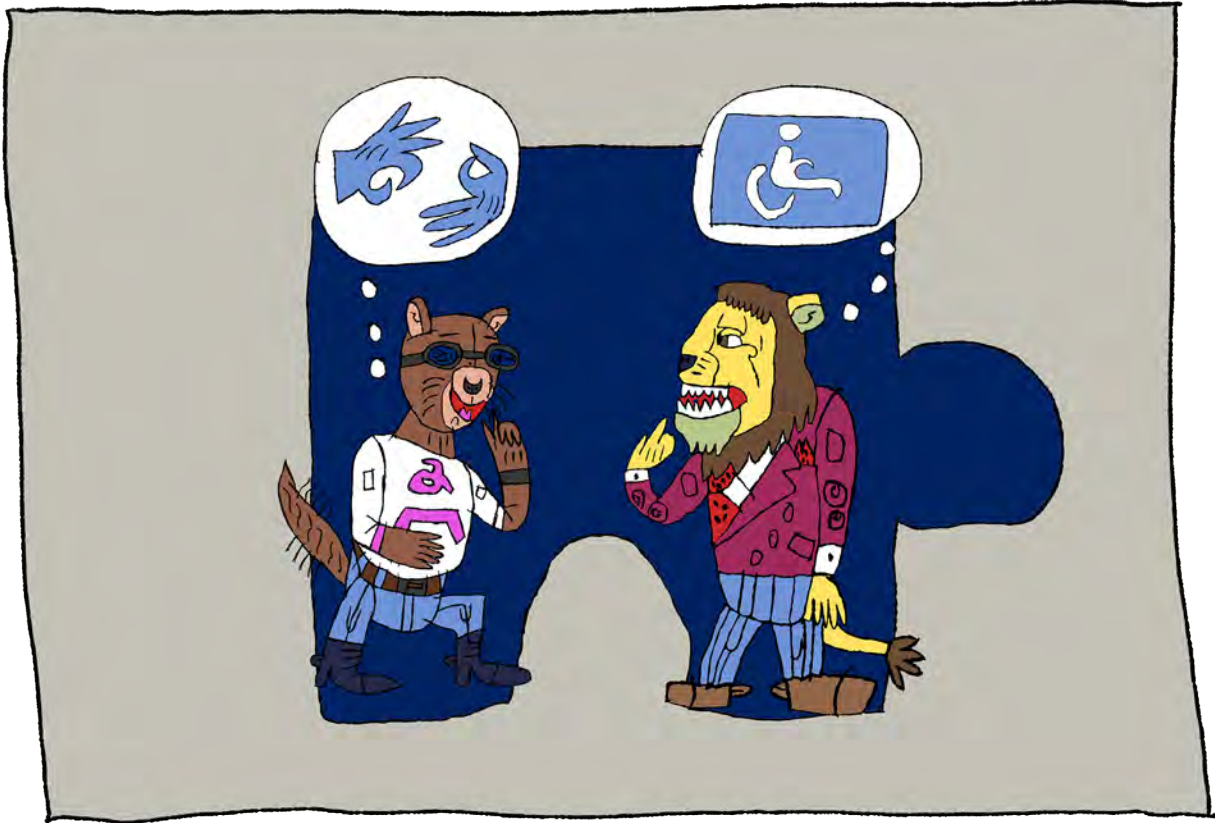
We now have a three-year plan, to make visiting and working with us easier.



**This is called our Disability Inclusion Action Plan.
We are focusing on 4 areas.**



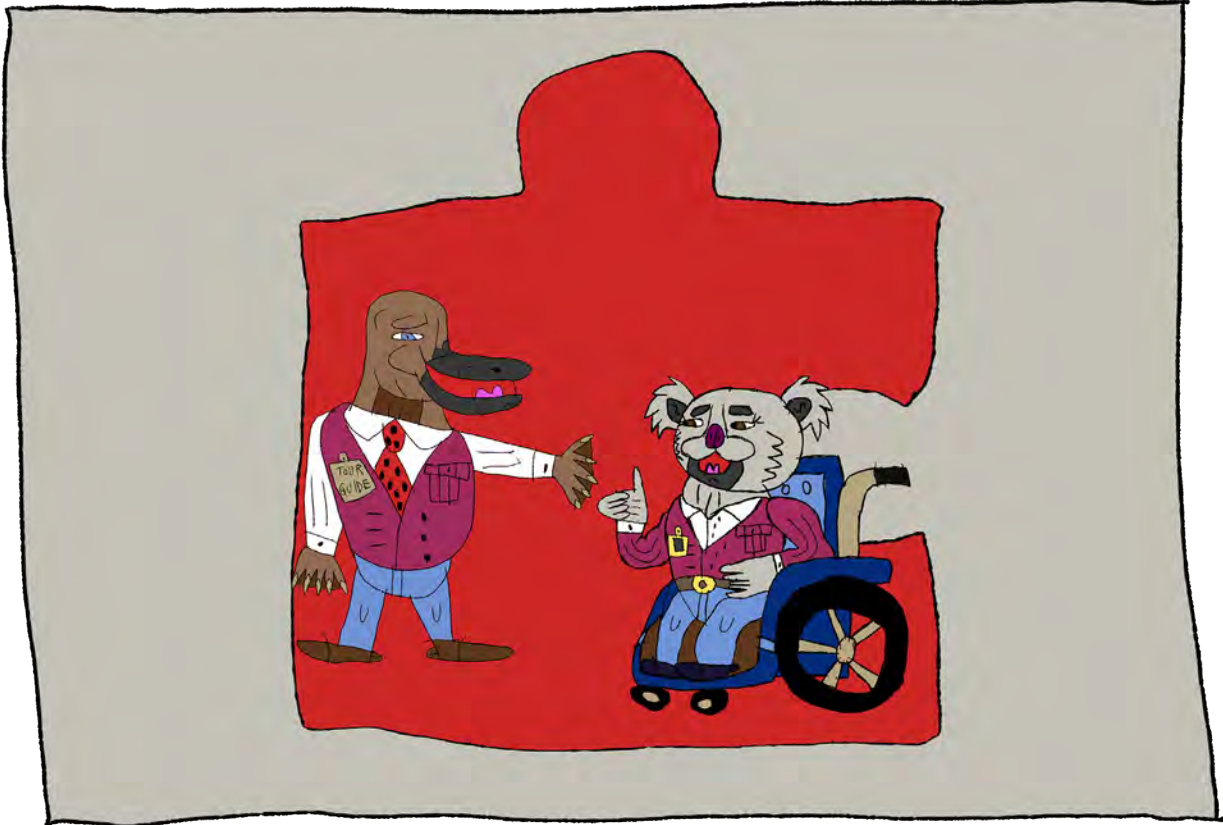
We will help everyone who works here to become more aware of people with disability and encourage positive attitudes.



We will make the Gallery more accessible to all visitors at the Gallery, online and on tour.



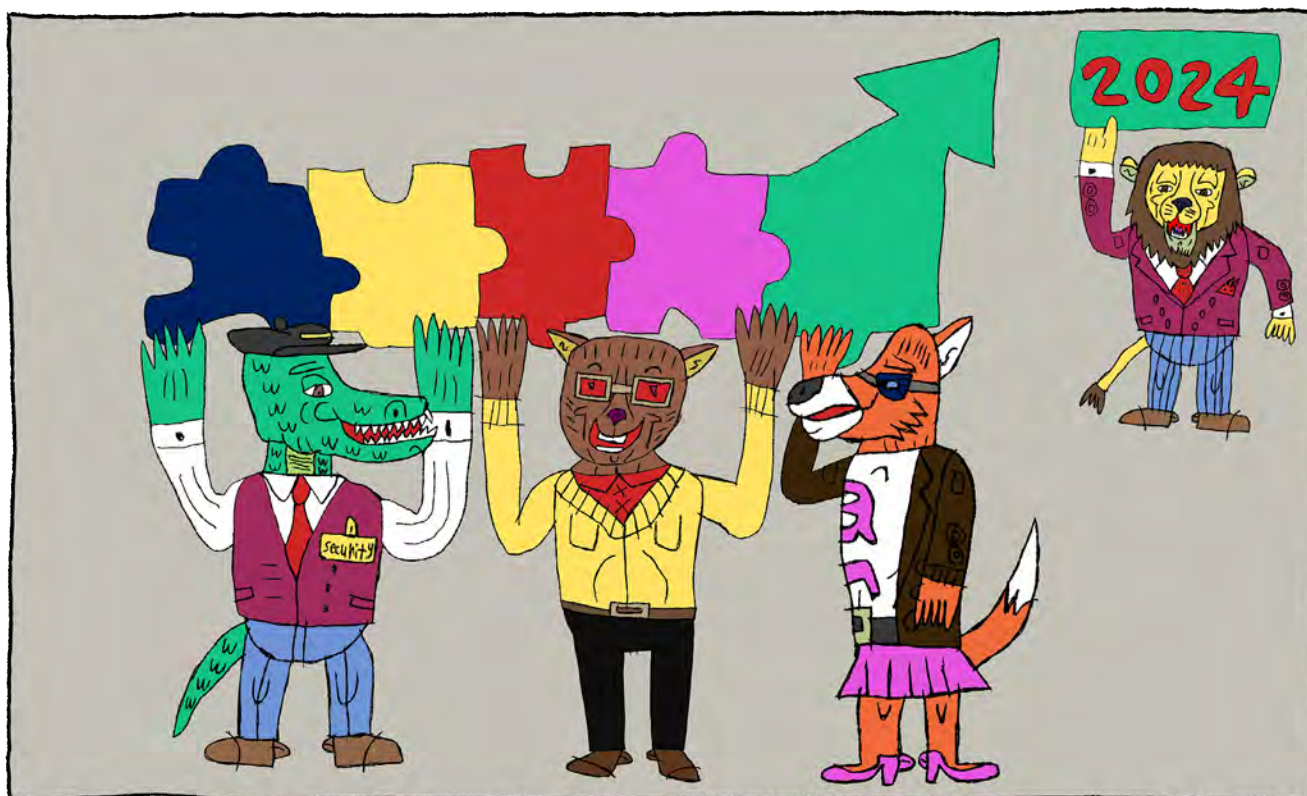
We will make it easier for people with disability to work with us.



And we will make it easier for people with disability to get what they need.



**In 2024 we will measure how much we have improved.
Then we can make a new plan.**



**We want to keep working with you to identify our barriers
and find solutions together. Keep in touch!**



This illustrated version of the National Gallery's Disability Inclusion Action Plan has been adapted and illustrated by Greg Sindel with production support provided by Studio A.

This has been a collaboration between the National Gallery, Studio A and Accessible Arts.

National Gallery of Australia
+61 2 6240 6411
information@nga.gov.au
nga.gov.au

